

East End Crane Replaced

Nov 17

Following months of preparation, ensuring stringent requirements were met before proceeding, the old East End Crane (EEC) has been removed and the new one successfully installed within the MSSS facility.

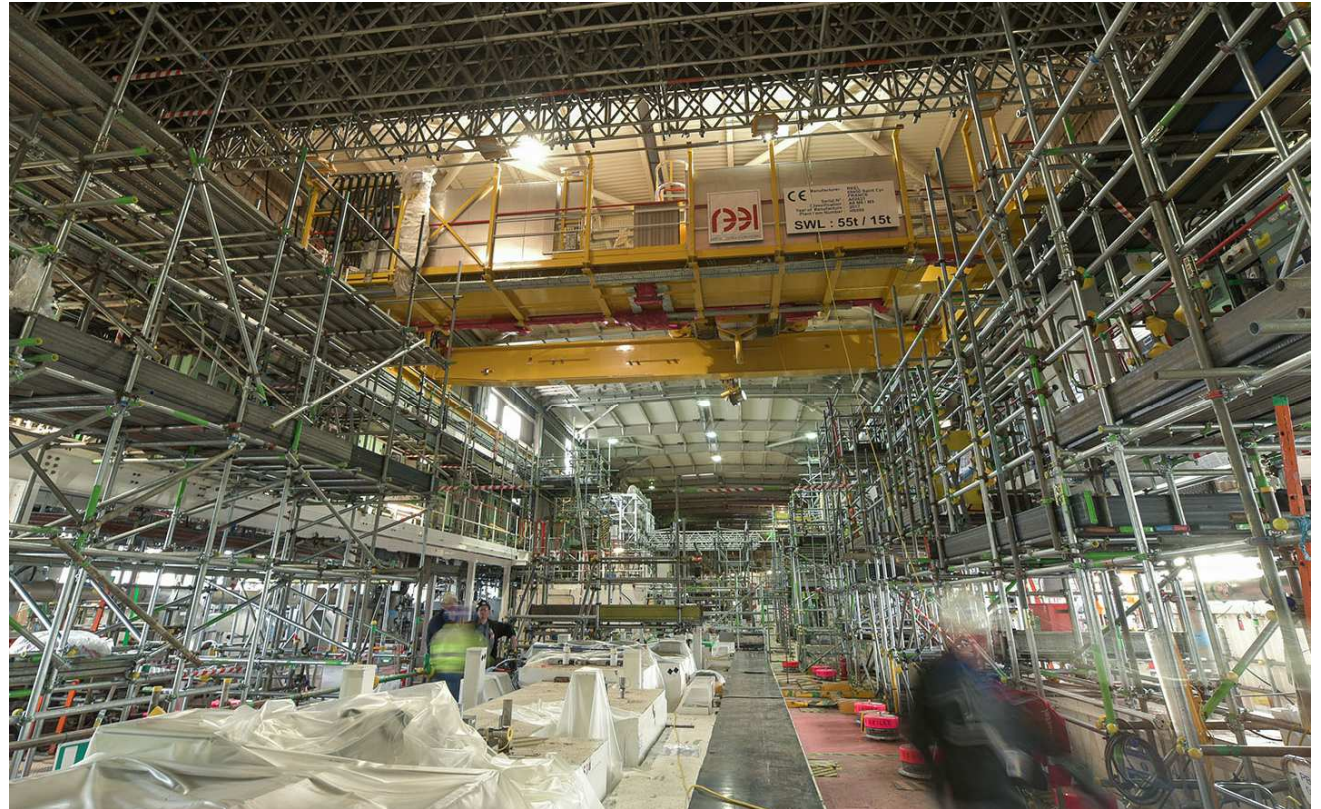
Due to numerous issues an optioneering decision was made to replace the old crane as a more efficient way forward than attempting to repair. The new crane, which has been designed and manufactured by reputable firm REEL, is a much simpler, fit for purpose solution.

Whilst the new crane will ultimately support SEP3 operations a window of opportunity was identified to install now to mitigate the impact on retrieval operations.

Consisting of 71 Cat A lifts, the old crane was lifted out through the facility roof and the new 56t crane installed with the help of the 500t construction crane over two months.

The work has involved the dedication and collaboration not only of the MSSS teams but with our contractors and other surrounding facilities. It also included regular reviews from our regulators throughout the task to provide assurance that work continued in a controlled and efficient manner from start to finish.

For further information please contact:
Haley Kerr x81933



What is the Benefit?:

The new, simpler crane will support retrieval operations. The fit for purpose solution should mitigate any potential failures / issues which it's predecessor had incurred.

Which Programme Benefit does the Success align to?

Benefit 1: Safer, More Efficient Control and Delivery of Work

Benefit 3: Site Risk and MSSS Facility Risk and Hazard Reduced due to Bulk Waste and Liquor Retrieval.