

AERONAUTICS

WORKING TOGETHER, FLYING FURTHER
THROUGH INNOVATION, SAFETY & QUALITY



REEL
GROUP



OVER
3000
PEOPLE



FOUNDED IN
1946
BY CHARLES FRANTZ



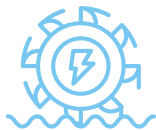
BASED IN
34
COUNTRIES



€
775M
2024 TURNOVER



AERONAUTICS



HYDRO-ENERGY



OFFSHORE
& MARINE
ENERGIES



INDUSTRIES &
ENVIRONMENT



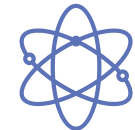
LARGE SCALE
PROJECTS



ALUMINIUM



DEFENCE



NUCLEAR



REEL TECHNOLOGY AT THE SERVICE OF OUR CLIENTS

REEL is a global leader in lifting & handling systems and critical mechanical systems for industries where safety and reliability are imperative.

Our teams design, manufacture, assemble, commission and maintain high-performance solutions according to our customers' requirements.

Our more than 3 000 employees are committed on a daily basis and make us a trusted partner across energy, aeronautics, defense, offshore, aluminum and the environment domains.

Nearly **80 years of experience** as a Tier 1 supplier for

- design, manufacturing and maintenance,
- complex and highly technical systems and solutions,
- lifting and handling in demanding environments.

A strong technical culture and expertise

that we ensure to protect, enrich and transmit (support, technical database, coordination committee of the Technical Department, Graduate Program, etc.)

Within the Divisions a business-driven mindset and a pro-active approach

with Business Units managing their own project, service and design office resources as close as possible to customers.



OUR **AERONAUTIC** EXPERTISE

Backed by more than 500 professionals worldwide, the group ensures end-to-end project management, delivering high-quality and high-performance solutions to aircraft manufacturers and airlines alike.

REEL designs and delivers full assembly lines for aircraft manufacturers, complete maintenance installations for airlines and MRO, and provides a wide range of industrial services.

Its expertise also extends to **advanced portable and robotic drilling systems**, as well as **an embedded hoisting solution for helicopters**.

This unique combination of capabilities enables REEL to support both aircraft production and operational phases, with integrated, high-performance solutions tailored to every stage of the aeronautics lifecycle.

As an integrator REEL brings together a full range of capabilities - **including design production supply chain coordination and commissioning** - complemented by integrated services.

Constantly anticipating technological shifts in industry evolutions, REEL remains at the forefront of innovation in aeronautic engineering and services.





With **over 60 years of experience** in aeronautic industry, we play a **key role** across **all major phases of the value chain**.

STRUCTURAL TOOLING



OPERATIONAL SAFETY FIRST

Historic supplier to major aeronautic players, REEL makes the health and safety of its employees and partners a priority and a shared culture.

One goal: zero incident, anytime and anywhere

From the design phase in our engineering offices, **we prioritize safety — both for the teams who install and integrate our equipment, and for the end users and operators.**

On each of our clients' sites and premises, a dedicated safety team supervises all activities.

50 safety advisors are permanently deployed to implement our safety culture program, reaching 600 managers and their teams.

We operate worldwide, at the heart of our clients' processes, as both a builder and a maintenance provider.

To ensure the highest level of safety in all facilities under our management, **we have developed a safety policy that aligns training, stakeholder engagement, and a strong safety commitment** across the organization.

Knowledge and adherence to procedures, transparency, and a questioning mindset are the pillars we instill in all our employees.





THE FOUNDATION OF **OUR EXCELLENCE**

Our approach &
the success of our
projects is built on

5
key pillars

- 1/ Safety:** our top priority. The protection of people is at the heart of our development process, ensuring that they work in a secure and ergonomic environment at every stage (**ISO 45001**).
- 2/ Customer satisfaction:** we tailor every solution to meet and exceed our clients' expectations.
- 3/ Quality:** our rigorous processes and quality management certified on our various sites (**EN 9100 & ISO 9001**) ensure flowless execution across the entire process.
- 4/ Performance:** we constantly optimise our methods to deliver maximum efficiency and productivity in a sustainable approach.
- 5/ Employee training:** we invest in developing our teams to maintain cutting edge expertise and innovation with our internal school REEL Academy.

ASSET MANAGEMENT

Optimizing Total Cost of
Ownership



FULL INTEGRATED DESIGN OFFICE

Mechanical, electrical
& automation design



END TO END SOLUTION



MAINTENANCE & SERVICES

Proximity-based support through
a network of local branches



MANUFACTURING & ASSEMBLY

- 5 factories worldwide
- Solid and integrated supply chain built on a global network of reliable, high-performing partners with diversified industrial capabilities



ON SITE INTEGRATION & COMMISSIONING

Transport, installation & commissioning at client's sites

AERONAUTICS SYSTEMS INTEGRATOR

A global, turnkey approach combining technological performance, industrial reliability and international presence.

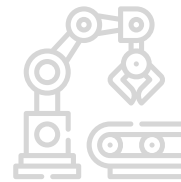
We design and implement tailor made assembly and maintenance lines that meet the specific requirements of each aeronautics leaders.

Our approach includes:



Advanced engineering:

using cutting-edge technologies for optimal system design.



Smart automation:

integrating automated systems to enhance accuracy and productivity.



Operational flexibility:

adapting to evolving needs and technological advancements.



Comprehensive support:

from design to commissioning with continuous assistance.



Our proven
experience with
major industry
players reflects
our **ability**
to meet the
most complex
challenges.

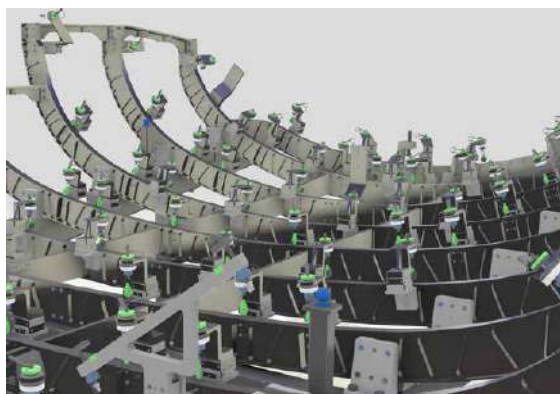
MOVING LINE ASSEMBLY

INNOVATIVE SOLUTIONS FOR PRODUCTION EXCELLENCE

REEL delivers proven, cutting-edge solutions that enhance precision, flexibility and efficiency in production processes, ensuring sustainable performance over time.

Measurement-based assembly

Our measurement-based assembly method, developed in-house, has been successfully deployed on our customers' production lines to ensure consistent quality and perfect compliance from the first assembly.



High precision tooling

We design and manufacture **specific and custom tools**, adapted to the most stringent technical requirements, in order to support our customers in the control of their critical operations.

Smart mobility solutions

We deliver innovative and diverse mobile solutions to support agile production logistics and enhance operational flexibility.

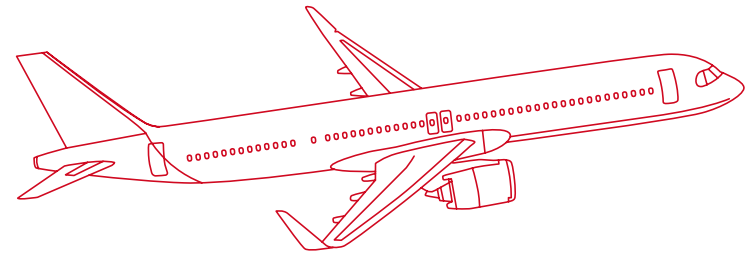
COMPLETE MOBILITY SOLUTION

Lean management

We integrate the principles of Lean Management to optimize production flows and improve efficiency.



A GLOBAL PRESENCE WITH LOCAL PROXIMITY



With strategic locations in Europe, North America, and Asia, we offer worldwide coverage while staying close to our clients.

Our international footprint enables us to:

- respond quickly thanks to our local teams
- adapt to regional needs, including local regulations and cultural specificities
- ensure continuous support with on-site maintenance and technical assistance



FACTORIES



MAINTENANCE



COMPLETE HANGAR EQUIPMENT: **AN INTEGRATED SOLUTION**



AEROSTRUCTURE ASSEMBLY STATION FOR SINGLE AISLE



OVERHEAD CRANE FOR ASSEMBLY LINE

We offer a comprehensive range of products for equipping our clients' hangars, including:

- Lifting systems: Installation of overhead cranes and hoists adapted to your needs.
- Technical networks: design and supply of easements dedicated to the customer's manufacturing process (electrical, pneumatic, suction).
- Logistics: Optimization of the flow of parts, tools, handling as well as the management of staff movements.
- Ergonomic Workstations: Design of workspaces that promote safety and efficiency.

Our integrated
solution **thus**
ensures optimal
performance.

2 COMPLEMENTARY AREAS OF EXPERTISE FOR **PAINT SHOPS** & **MAINTENANCE HANGARS**

Our post-assembly solutions are designed for aircraft manufacturers and include the supply of telescopic platforms and paint shops that are seamlessly integrated into production lines.

In addition, we offer airlines and Maintenance, Repair and Operations (MRO) centers complete maintenance facilities, including:

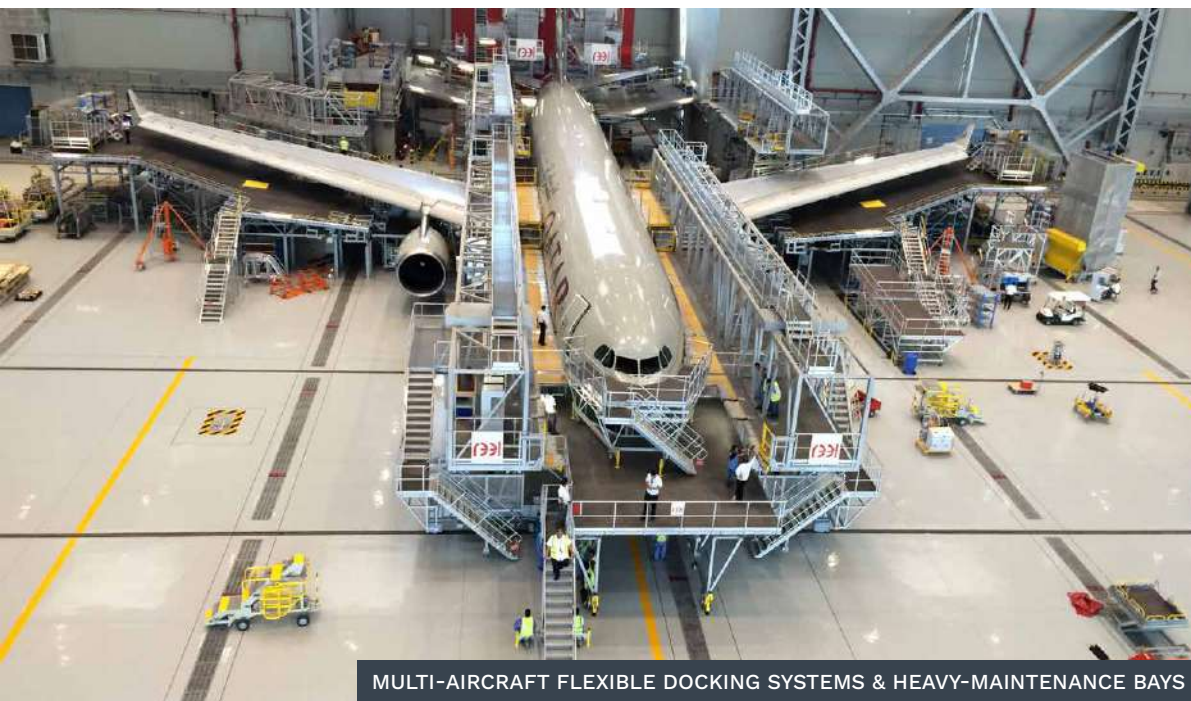
- Aircraft access equipment for multi-aircraft,
- Specific tools,
- Ground Test Equipment and Ground Support Equipment.

These suspended or on-ground access with the highest rigidity are designed to optimize maintenance operations while ensuring safety, productivity and efficiency.





MULTI-AIRCRAFT FLEXIBLE DOCKING SYSTEMS & HEAVY-MAINTENANCE BAYS



MULTI-AIRCRAFT FLEXIBLE DOCKING SYSTEMS & HEAVY-MAINTENANCE BAYS



SUSPENDED TELESCOPIC PLATFORMS FOR AIRCRAFT PAINTING & MAINTENANCE

REEL CUTTING-EDGE TOOLS DRIVING INNOVATION

REEL designs and manufactures Electric Drilling Units for portable and light robot applications, specifically in the aerospace industry.

REEL- Electric Drilling Unit includes 4 models, each optimized for a specific diameter range and up to 24mm in one-shot operation. They feature advanced functions such as electronic vibratory drilling, first layer detection and countersink depth correction, ensuring precision and reliability.

100% ELECTRIC DRIVING, to create a full parametrizable drilling process

ENGINEERED FOR WORKERS, portative & easy to handle

VERSATILITY of the machine & programmable

SUITED FOR ROBOT USE & READY FOR FACTORY 4.0

- Integrable on robotic machinery, remotely programmable and controllable
- Recording and storing operation data
- Cutting tools life management functions

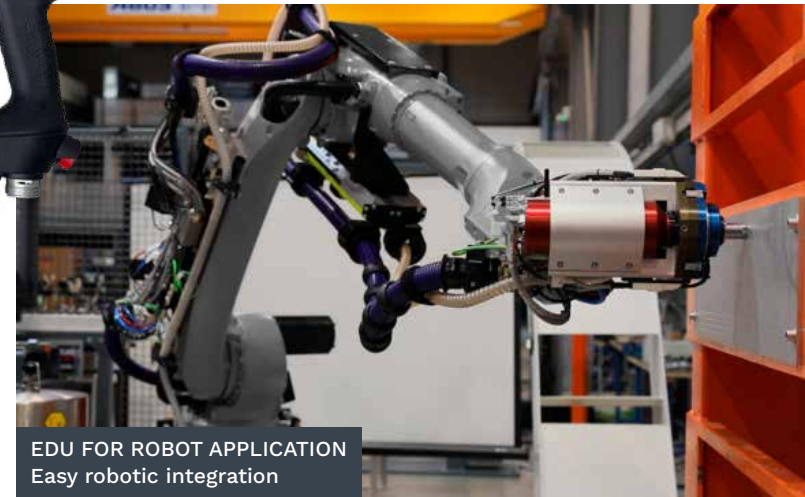
Customer benefits

PRODUCTIVITY ENHANCEMENT

- Remote programming and control, repeatability and accuracy
- Potential operations simplifications with low exit burr and easy chips extraction

LOW OPEX & ENVIRONMENT IMPACT

- Near maintenance-free
- Lubricant consumption reduction.



EDU FOR ROBOT APPLICATION
Easy robotic integration

ELECTRICAL DRILLING UNITS
High accuracy and modularity



NEW GENERATION **HELICOPTER HOIST**



REEL's "Class Alpha" Hoist is a state-of-the-art solution designed to take helicopter rescue operations to new heights.

This new generation hoist system is the result of meticulous engineering, specifically designed to meet the latest ETSO 2C208 safety norm established by EASA in 2022.

Its modular design allows for easy module interchangeability, ensuring continuous operability and quick adaptation to various situations or requirements.

It offers superior performances compared to legacy hoists : a maximum speed of 2.5m/s and a payload up to 303 kg.

Beyond raw performance, the hoist offers solutions to well-known hoisting issues:

- A patented and customizable overload protection device;
- Elimination of cable mis-wraps with the capstan technology;
- Increase in cable lifespan with the introduction of a hybrid cable;
- Reduction of maintenance time and cost due to its modularity and its embedded predictive maintenance functions.

SERVICE ACTIVITIES

Maintenance of your industrial plants

- Skills and professionalism of our staff trained by our internal REEL Academy school,
- Proximity to a better service with a network of regional agencies,
- Performance & reliability: Development of tools and methods to ensure the availability and security of production equipment (Maintenance strategy, CMMS, RCM, FMEA, TPM, KPi's...).

Our guarantee: Performance based contract

REEL provides multi year fixed price maintenance contracts with performance guarantees. These offers cover maintenance levels 1 to 4, spare parts management, inventory and obsolescence control as well as 24/7 technical support.

A dedicated team of technicians with skills tailored to your needs

Our experienced maintenance teams bring added value through their dual expertise in field operations and maintenance engineering. This integrated approach ensures a thorough understanding of asset behaviour at every stage of its lifecycle, supporting proactive maintenance strategies, improving equipment availability and extending service life.

Deployed over 30 Customer locations

+80 000
maintained
assets

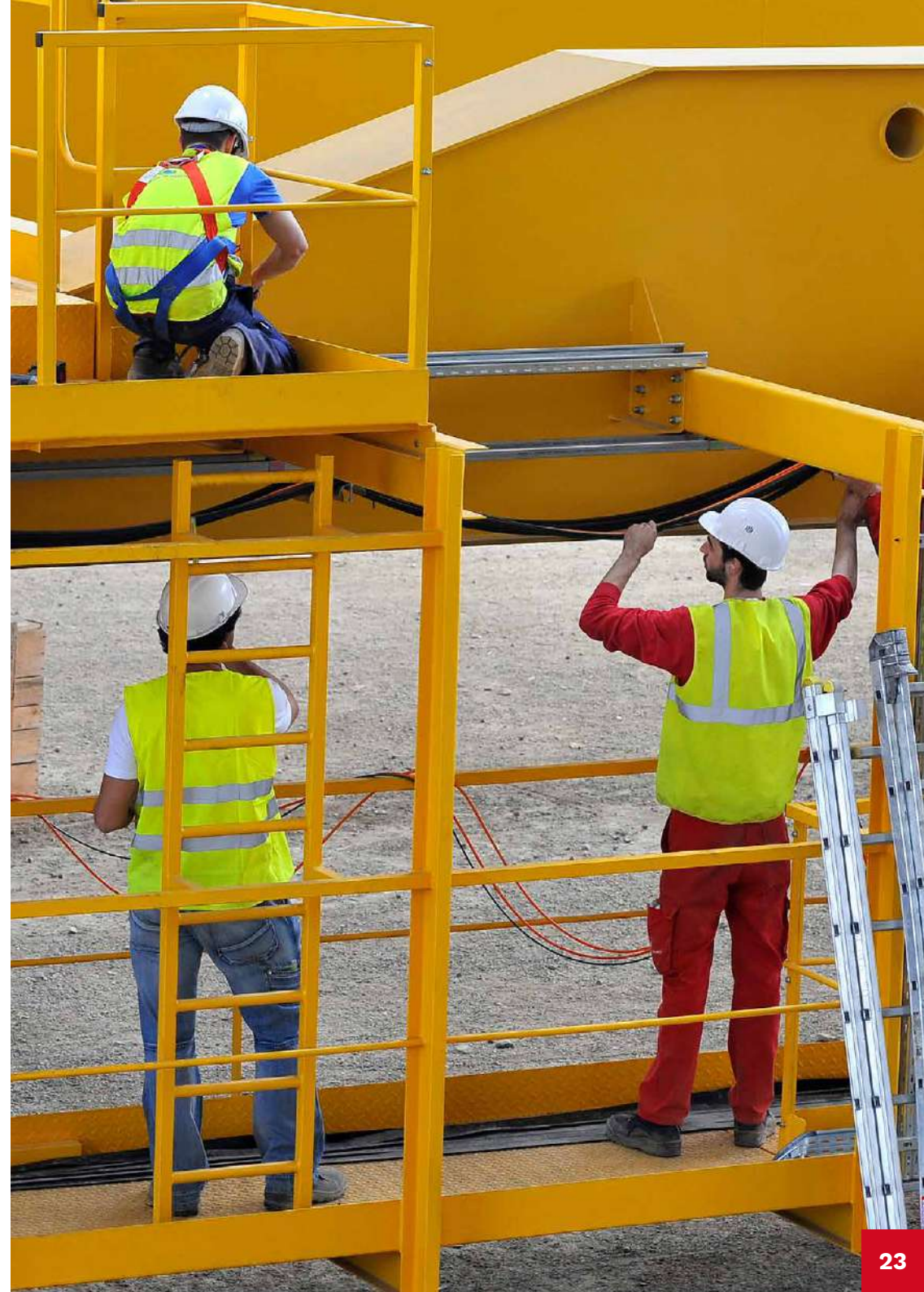
+500
technicians
& engineers



MAINTENANCE

Adapted services for each need:

- Preventive Maintenance
- Predictive & Condition Based maintenance
- Corrective and Reactive Maintenance
- Maintenance Methods
- Improvement, modernization and refurbishment works
- Spare parts management
- Technical assistance for regulatory controls
- On-call service
- Continuous improvement
- Training
- IIOT and equipment monitoring
- 4.0 platform for equipment data analysis





REEL SAS

69 rue de la Chaux
69450 Saint-Cyr-au-Mont-d'Or
FRANCE

commercial@reel.fr

+33 (0)4 72 29 76 00

www.reelinternational.com